

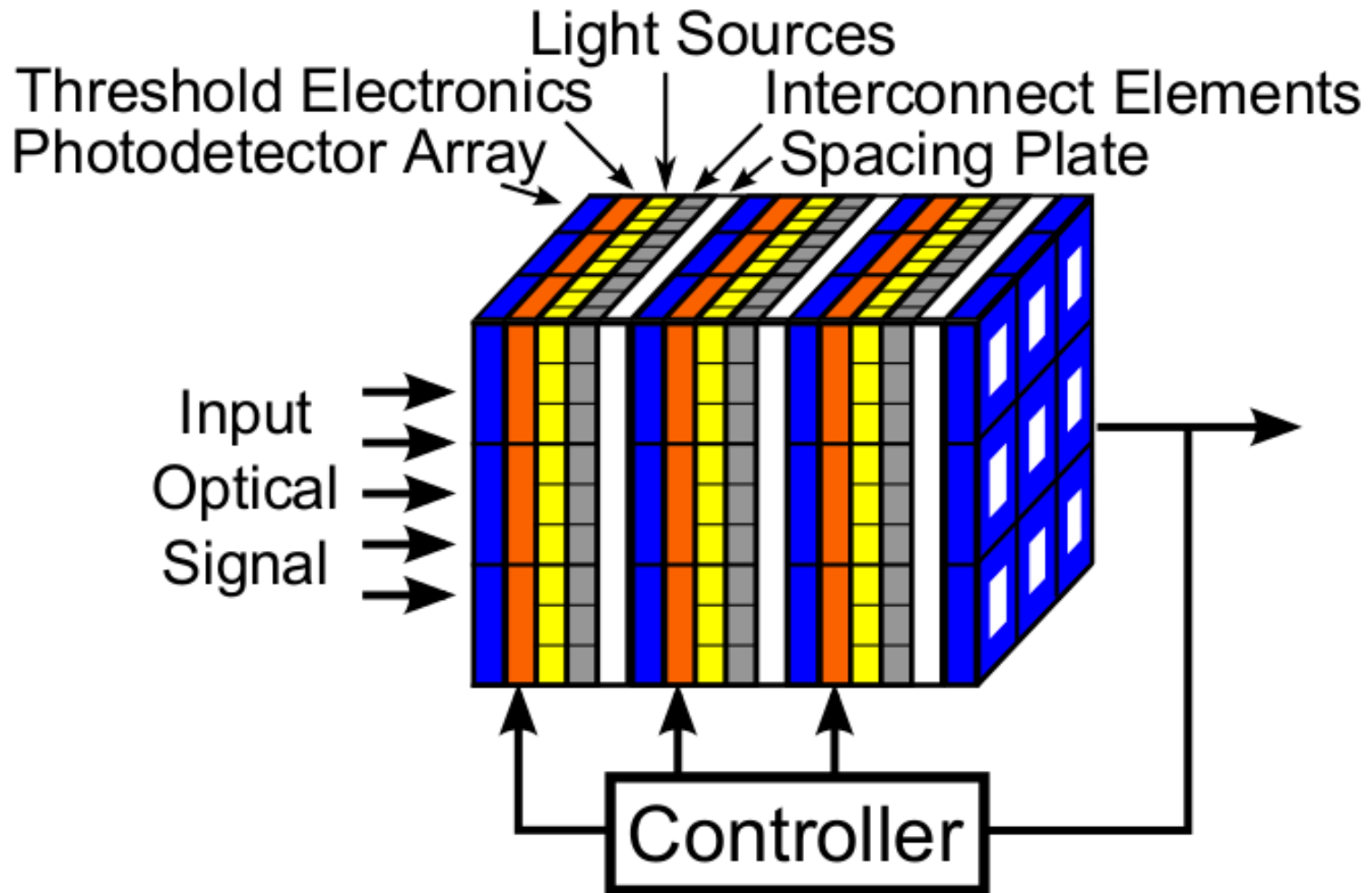
Meng. Thesis Summary

Design of Optoelectronic Activation
Functions for COIN Co-processor

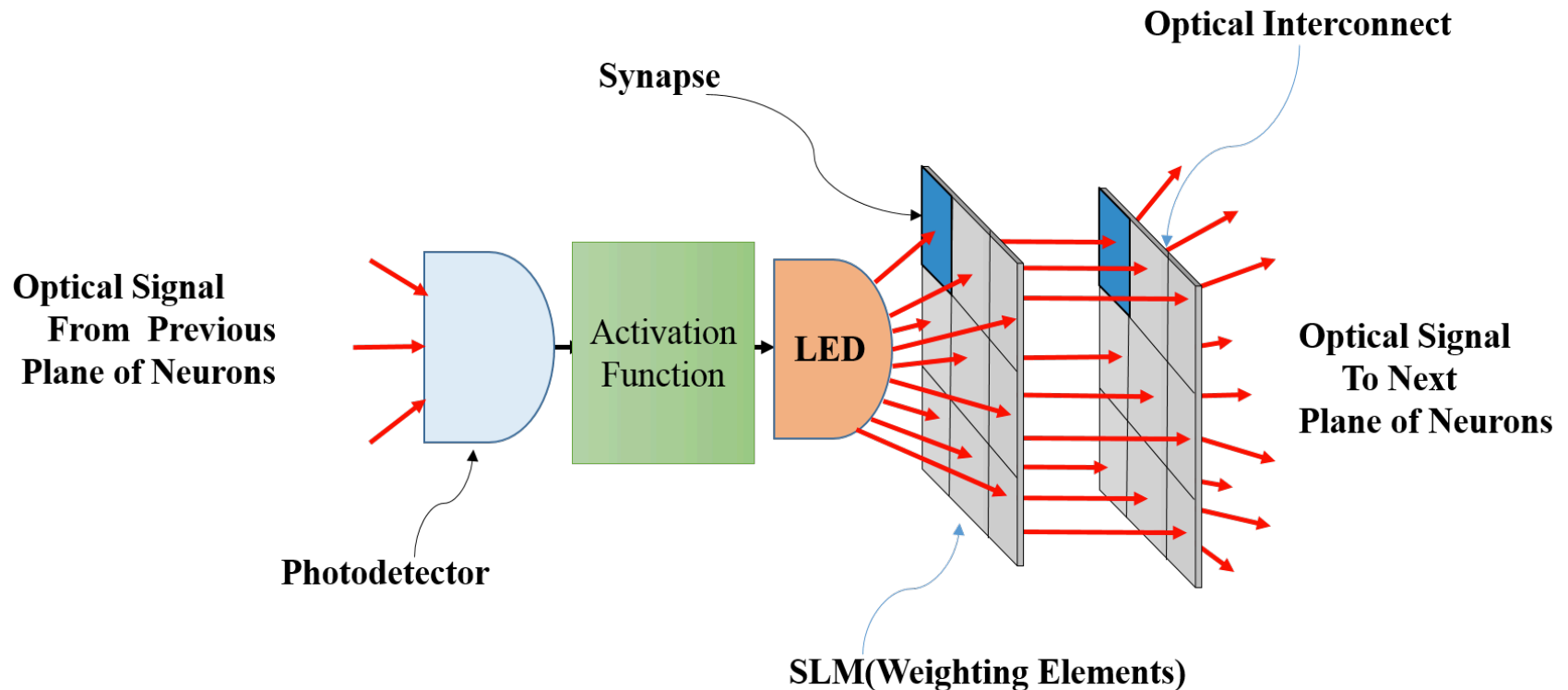
Wegene Tadele

September 15, 2015

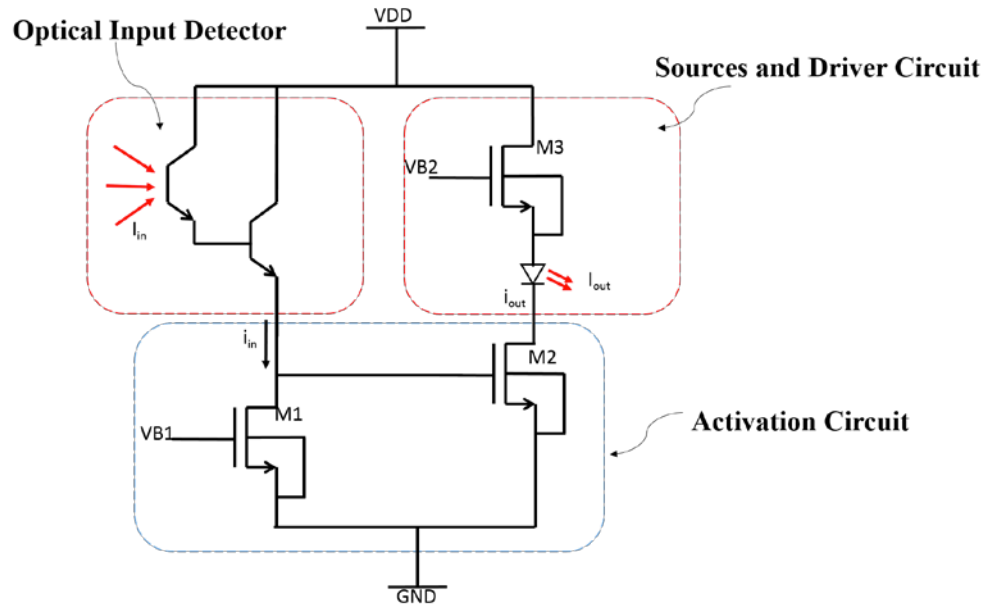
COIN Architecture



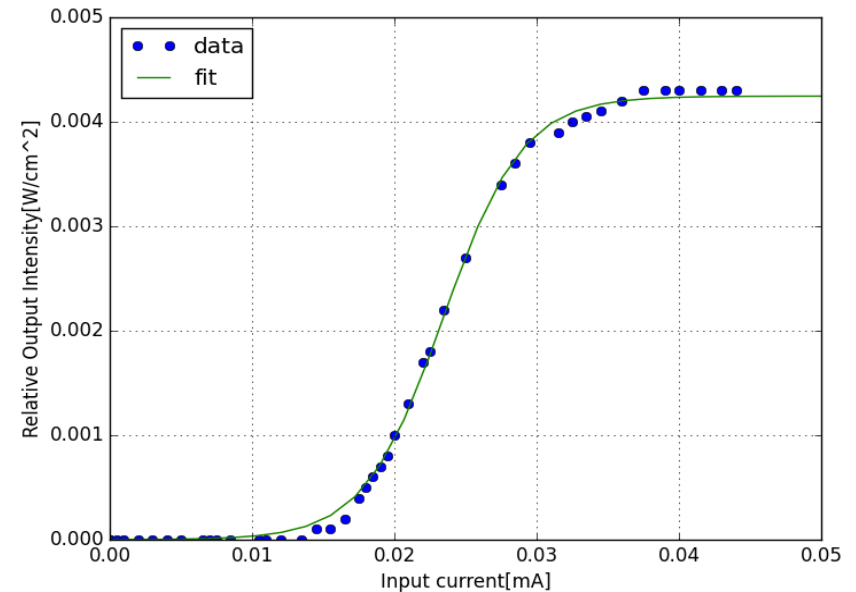
Pixel of COIN Model for Version-I Activation Function



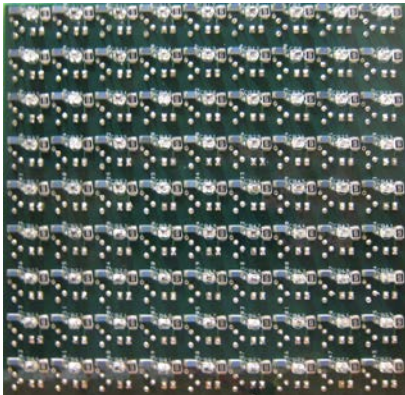
Version-I: Activation Function and Proof of Concept PCB



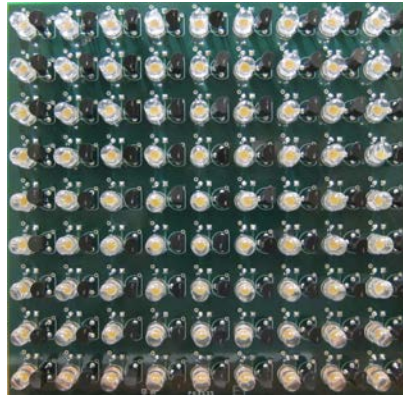
Circuit Model



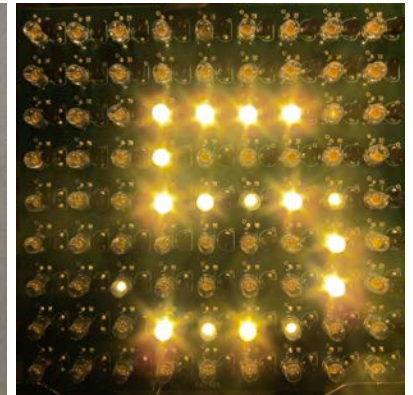
Transfer Function



Back of 9x9 array



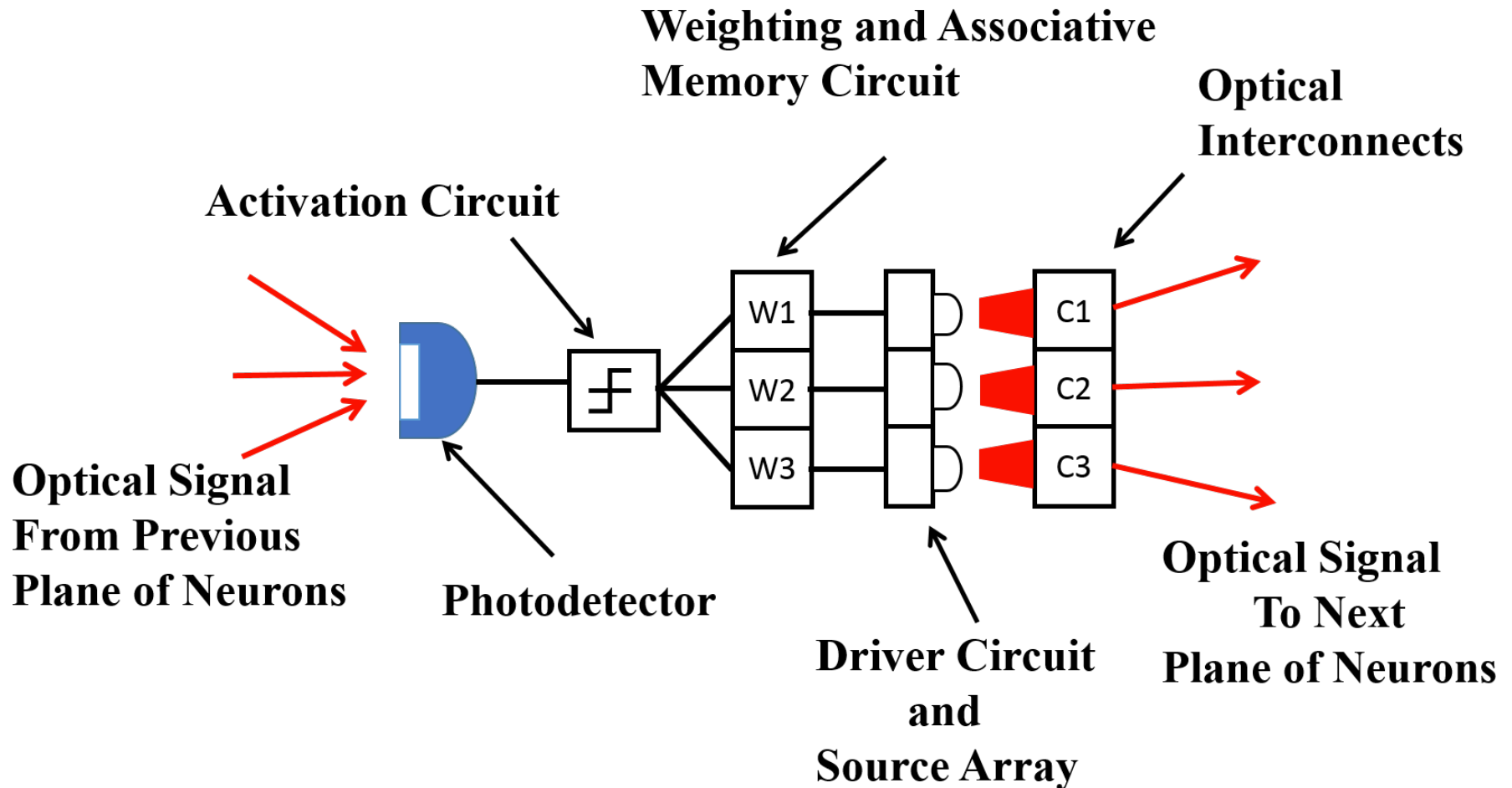
Front of 9x9 array



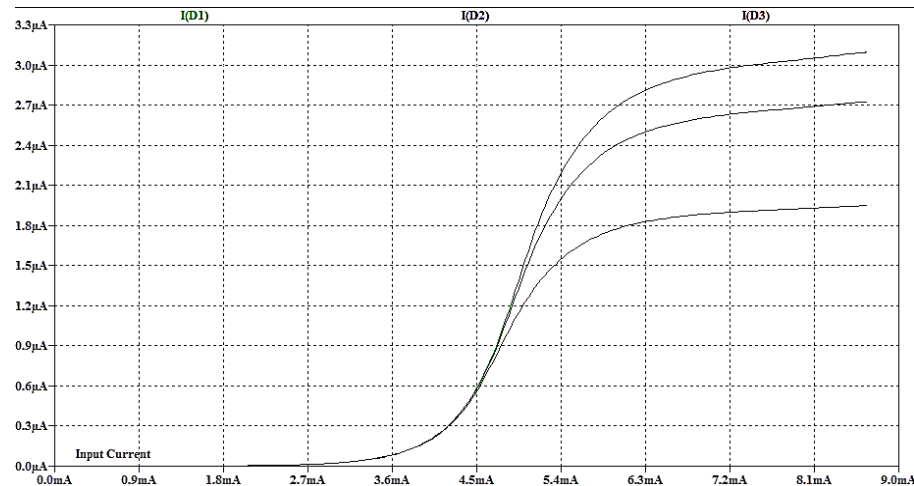
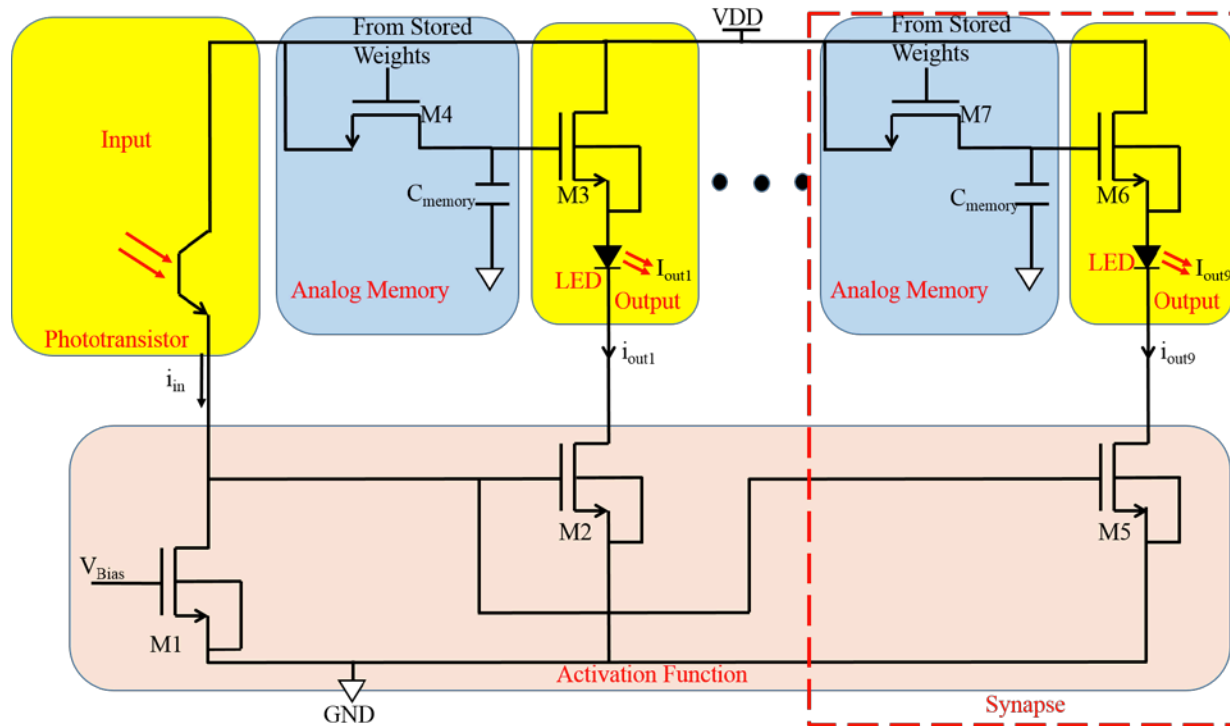
Projection of '5' onto the back of the PCB and the thresholded output

Pixel of COIN Model for Versions-II and III

Activation Functions



Version-II: Activation Function Implementation and SPICE Simulation



Version-III: Activation Function Implementation and SPICE Simulation

